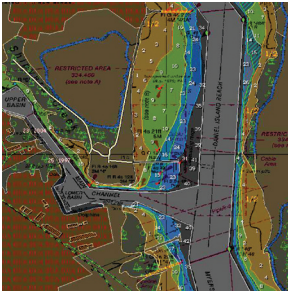




Geospatial Solutions

SDI delivers!



- **Database Design & Maintenance**

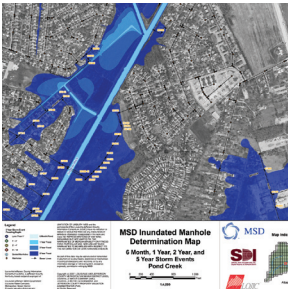
Create and maintain spatial databases using ESRI's Spatial Database Engine (SDE) and various relational databases.

- **Application Development**

Design and develop custom software solutions to meet the requirements and budgets of any organization.

- **Systems & Data Integration**

Create expansive access to spatial and non-spatial data sets, allowing enterprise users to locate and utilize data residing in diverse data sets and in different formats.



- **Emergency Management & Response**

Perform emergency planning and risk assessment. Create specific toolsets to support emergency agencies in preparedness and awareness regarding disasters and potential hazards.

- **Military Intelligence & Homeland Security (GeoINT)**

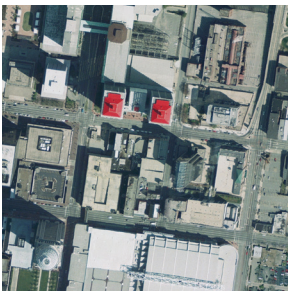
Create and analyze specific geospatial datasets and tools to support tactical and strategic military operations, homeland defense and civil support activities.

- **Navigation Safety**

Update and maintain global maritime geospatial data that supports navigation safety within coastal areas and major rivers.

- **Asset Management**

Acquire, evaluate and implement the information necessary to support the inventory and management of tangible property and infrastructure.



Spatial Data Integrations, Inc.

710 West Main Street - Suite 108, Louisville, KY 40202

Phone: (502) 568-2591 | Fax: (502) 568-6929 | www.SDImaps.com

SDI is a certified MBE founded in 1994. SDI's mission is to ensure client success and render extraordinary service in providing geospatial solutions to government agencies, utilities and private sector businesses.